

Light efficiency:

98 Lumen/Watt

Light quality:

CRI: 91.4

Color temperature:

3126 K

Output: 1671 lm

Peak: 694 cd

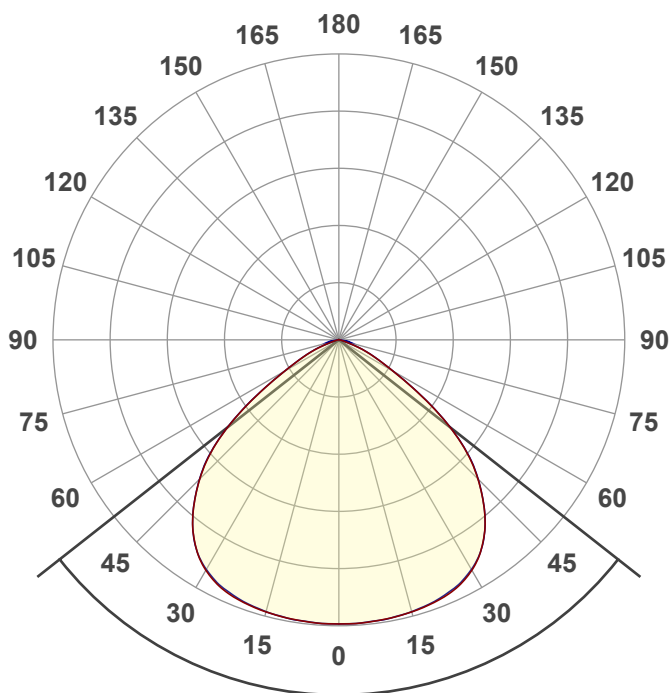
Power: 17.0 W

PF: 0.96



NU3-RD-SW-20LM-30K-90-55D-WDL-WH-WH

Date and time:
9/5/2025 10:05:02 AM



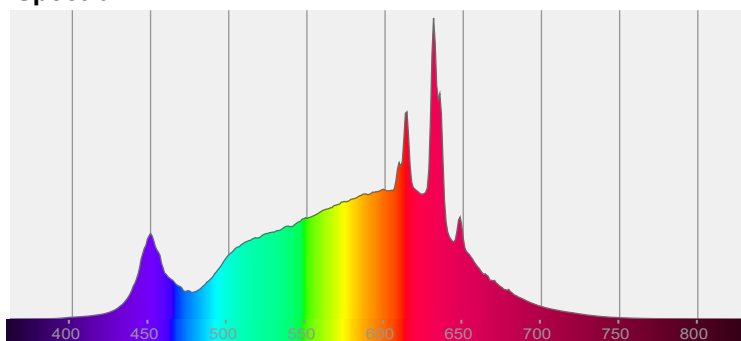
Beam angle

103.6°

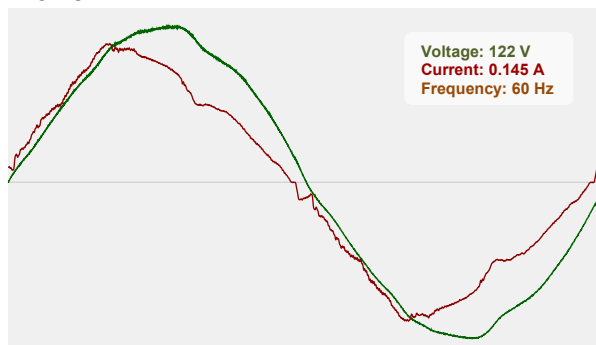


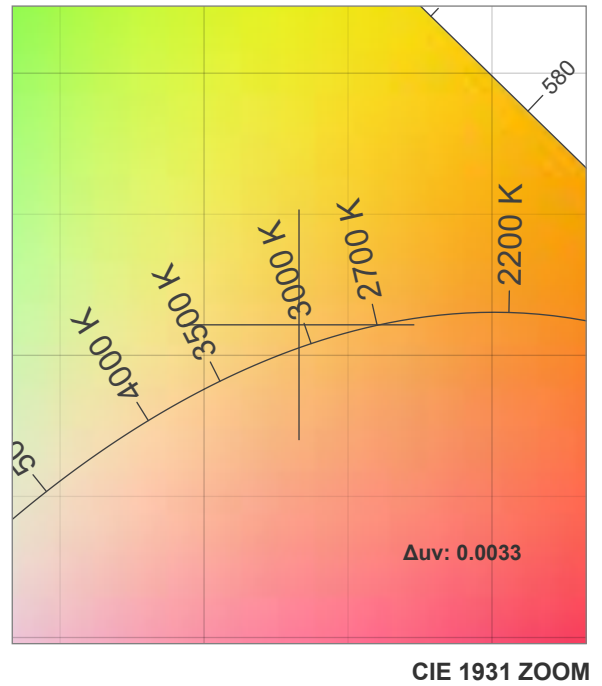
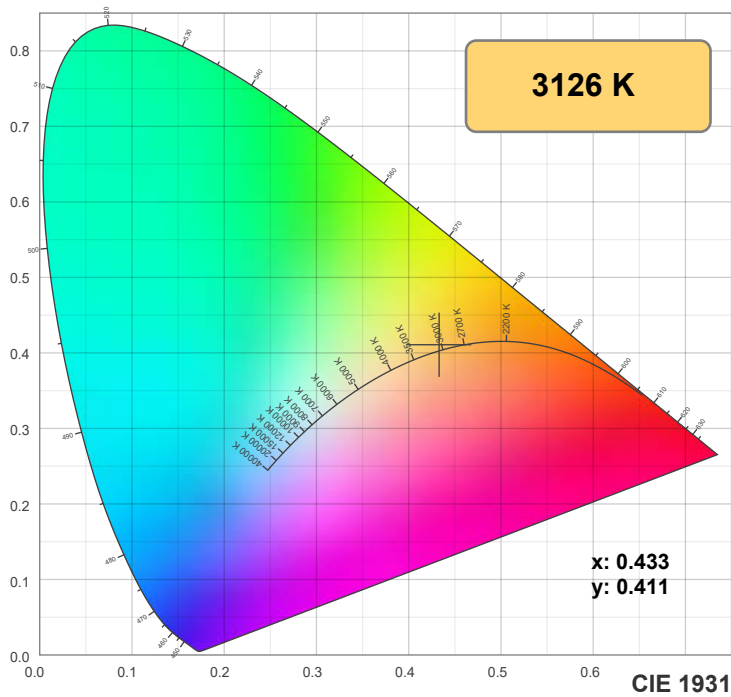
CIE 1931
x: 0.433
y: 0.411

Spectra

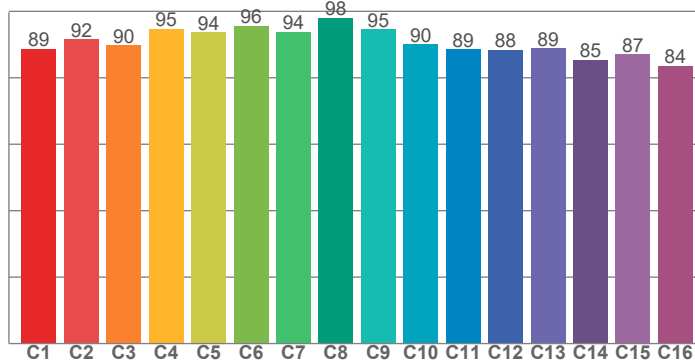


Power

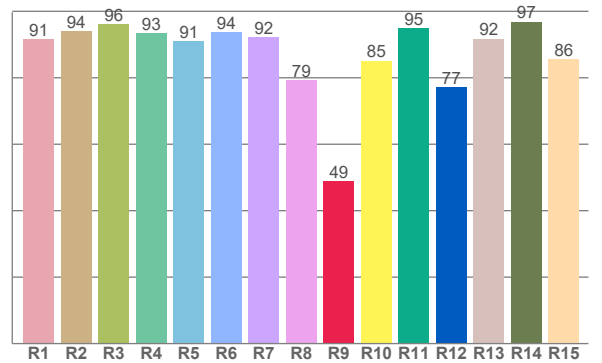




TM30: 91.0



CRI: 91.4 (R1-R8)



CRI R values, only R1-R8 are used to calculate final CRI value

R1	R2	R3	R4	R5	R6	R7	R8	R9	R10	R11	R12	R13	R14	R15
91.5	94.0	96.0	93.4	90.9	93.7	92.2	79.3	48.8	85.1	94.8	77.2	91.7	96.9	85.6

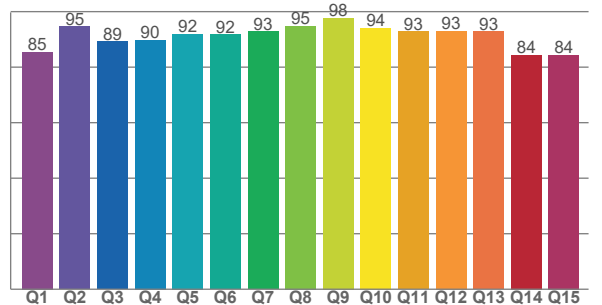
TM30 C values, 16 binned values out of total of 99 C values

C1	C2	C3	C4	C5	C6	C7	C8	C9	C10	C11	C12	C13	C14	C15	C16
88.8	91.6	89.7	94.8	93.6	95.6	93.8	98.0	94.6	90.0	88.6	88.3	88.9	85.4	87.0	83.6

CQS Q values

Q1	Q2	Q3	Q4	Q5	Q6	Q7	Q8	Q9	Q10	Q11	Q12	Q13	Q14	Q15
85.5	94.6	89.2	89.8	91.9	91.8	92.9	94.8	97.7	94.1	92.9	93.0	92.8	84.4	84.4

CQS: 90.4



Color parameters

Color temperature	Color rendering index	Red component	Color fidelity	Color gamut	Color quality scale	Color coordinate cie 1931	Color coordinate cie 1931	Color coordinate	Color coordinate	Color deviation from black body
CCT	CRI	CRI R9	TM30 Rf	TM30 Rg	CQS	x	y	u	v	Δuv
3126 K	91.4	48.8	91.0	98.5	90.4	0.433	0.411	0.245	0.349	0.0033

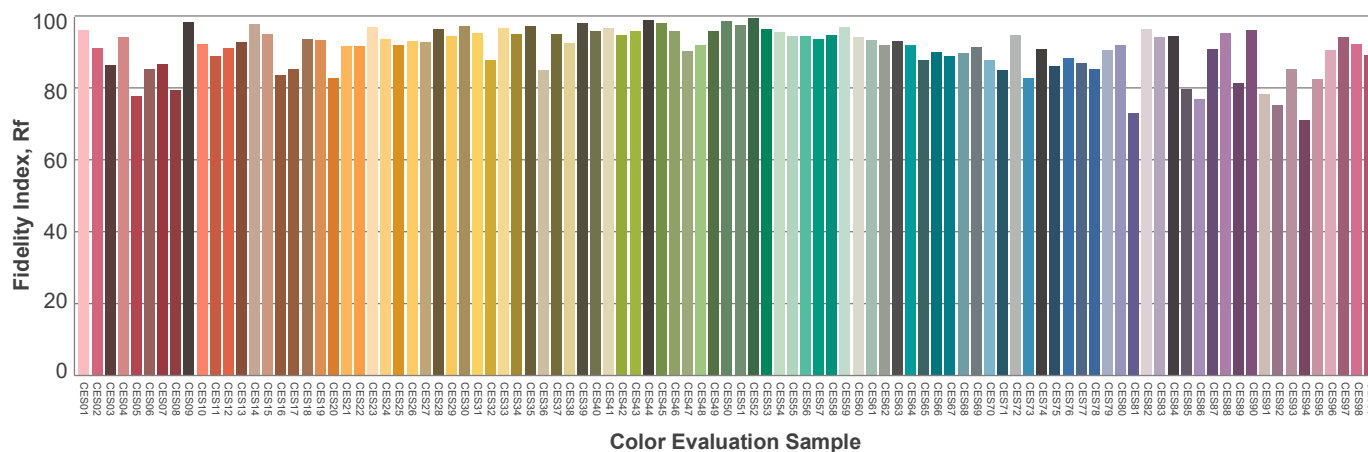
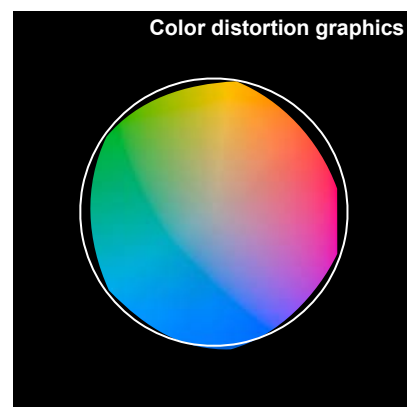
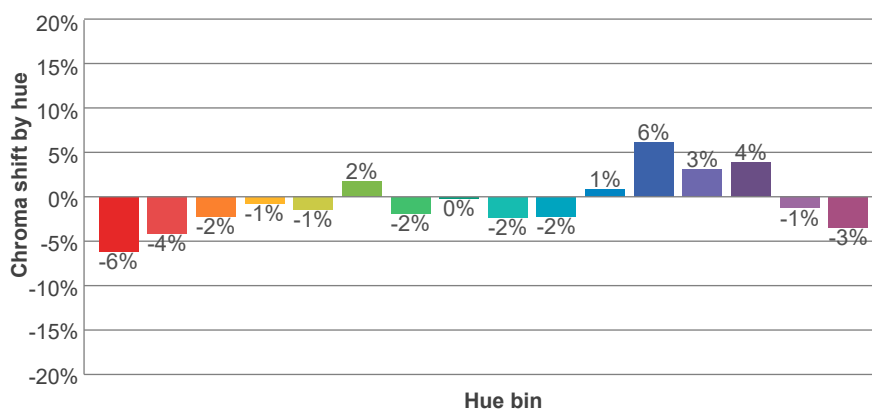
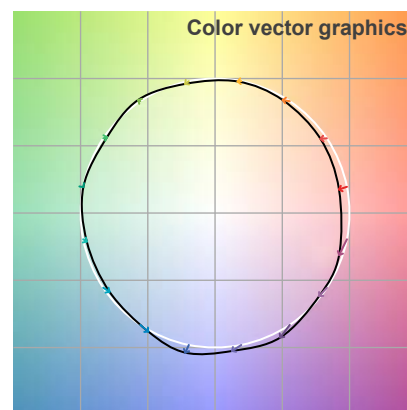
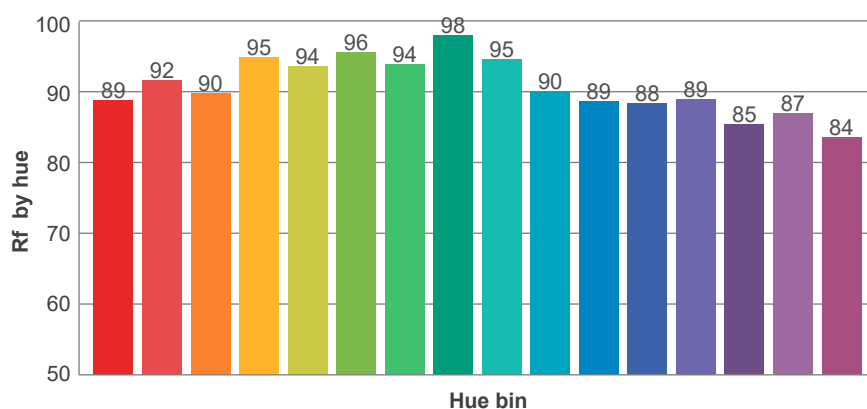
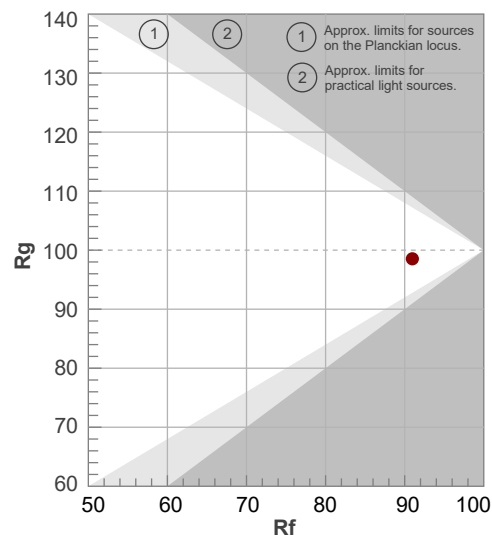
Rf 91.0

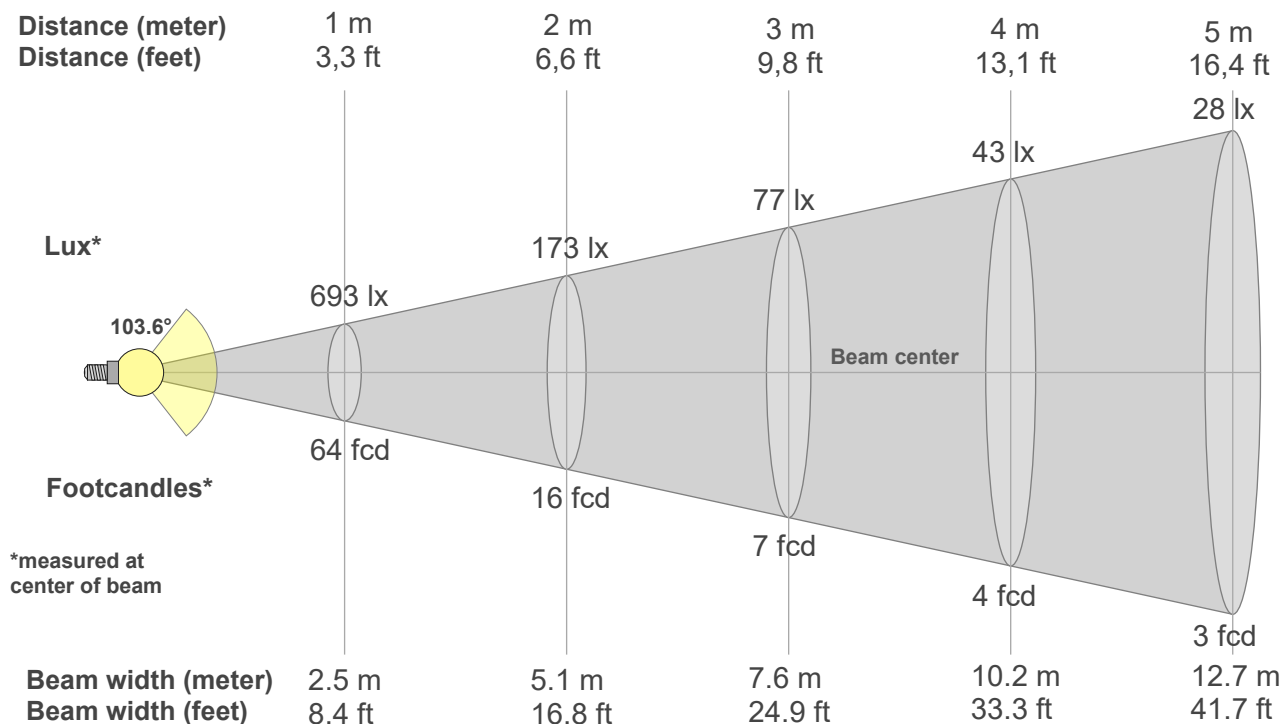
Fidelity index Rf

Rg 98.5

Gammut index Rg

Hue Bin	R _f	Graphic shifts (%)	
		Chroma	Hue
1	89	-6%	-1%
2	92	-4%	2%
3	90	-2%	5%
4	95	-1%	3%
5	94	-1%	3%
6	96	2%	1%
7	94	-2%	-2%
8	98	0%	0%
9	95	-2%	2%
10	90	-2%	5%
11	89	1%	8%
12	88	6%	-1%
13	89	3%	-8%
14	85	4%	-11%
15	87	-1%	-8%
16	84	-3%	-13%





Beam intensities from 1-20m

1m	2m	3m	4m	5m	6m	7m	8m	9m	10m	11m	12m	13m	14m	15m	16m	17m	18m	19m	20m
3.3ft	6.6ft	9.8ft	13.1ft	16.4ft	19.7ft	23ft	26.2ft	29.5ft	32.8ft	36.1ft	39.4ft	42.7ft	45.9ft	49.2ft	52.5ft	55.8ft	59.1ft	62.3ft	65.6ft
693lx	173lx	77lx	43lx	28lx	19lx	14lx	11lx	9lx	7lx	6lx	5lx	4lx	4lx	3lx	3lx	2lx	2lx	2lx	2lx
64.4fcd	16.1fcd	7.2fcd	4fcd	2.6fcd	1.8fcd	1.3fcd	1fcd	0.8fcd	0.6fcd	0.5fcd	0.4fcd	0.4fcd	0.3fcd	0.3fcd	0.3fcd	0.2fcd	0.2fcd	0.2fcd	0.2fcd

Intensities in 0° c-plane

0°	5°	10°	15°	20°	25°	30°	35°	40°	45°	50°	55°	60°	65°	70°	75°	80°	85°	90°	95°
693	693	691	687	682	671	649	611	554	480	388	265	154	89	40	13	6	2	0	0
100%	100%	100%	99%	98%	97%	94%	88%	80%	69%	56%	38%	22%	13%	6%	2%	1%	0%	0%	0%

Intensities in 90° c-plane

0°	5°	10°	15°	20°	25°	30°	35°	40°	45°	50°	55°	60°	65°	70°	75°	80°	85°	90°	95°
693	693	691	687	680	668	647	611	554	481	389	267	154	90	41	13	21	4	0	0
100%	100%	100%	99%	98%	96%	93%	88%	80%	69%	56%	38%	22%	13%	6%	2%	3%	1%	0%	0%

Intensities in 180° c-plane

0°	5°	10°	15°	20°	25°	30°	35°	40°	45°	50°	55°	60°	65°	70°	75°	80°	85°	90°	95°
693	693	691	687	682	671	649	611	554	480	388	265	154	89	40	13	6	2	0	0
100%	100%	100%	99%	98%	97%	94%	88%	80%	69%	56%	38%	22%	13%	6%	2%	1%	0%	0%	0%

Intensities in 270° c-plane

0°	5°	10°	15°	20°	25°	30°	35°	40°	45°	50°	55°	60°	65°	70°	75°	80°	85°	90°	95°
693	693	691	687	680	668	647	611	554	481	389	267	154	90	41	13	21	4	0	0
100%	100%	100%	99%	98%	96%	93%	88%	80%	69%	56%	38%	22%	13%	6%	2%	3%	1%	0%	0%

Beam angle 50%	Field angle 10%	Cutoff angle 2,5%	Intensity ratio in 120° cone	Intensity ratio in 90° cone
103.6°	134.1°	152.6°	93.2%	68.3%